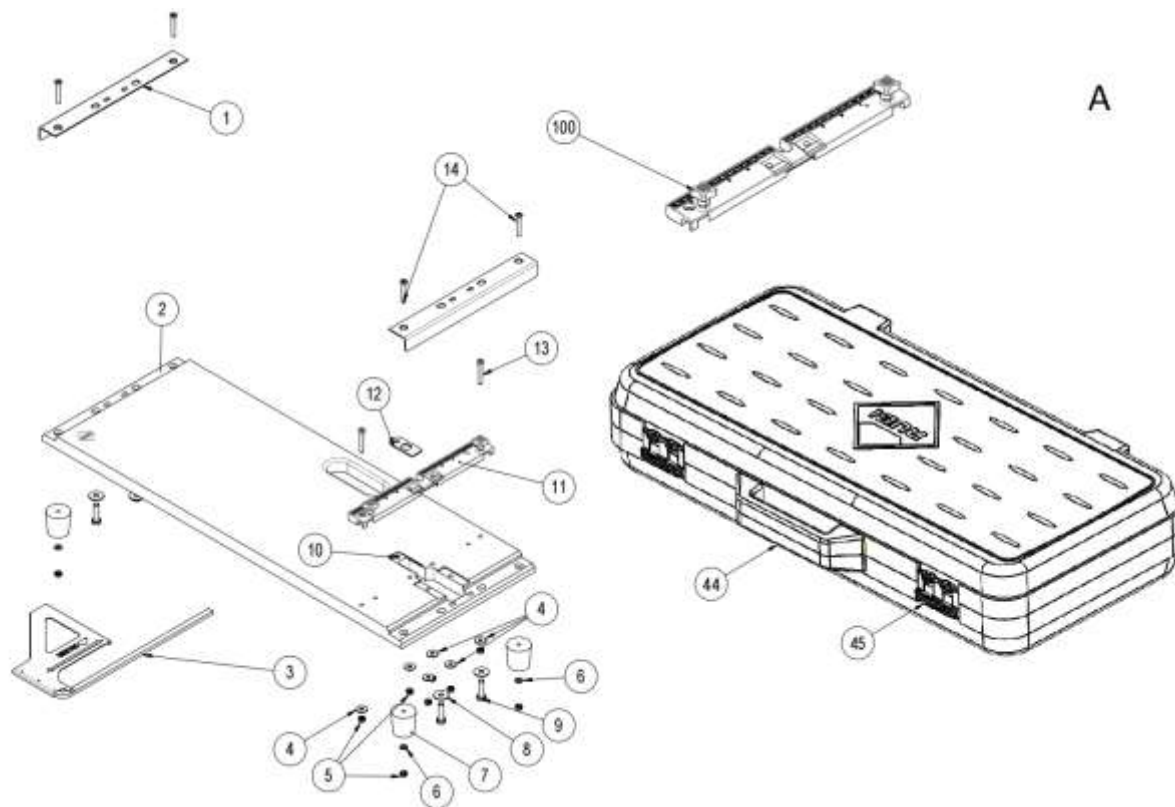


Part-list	ES	EN	Prod.
1	A	GRUPO BASE	BASE GROUP
2	B	GRUPO GUIAS Y SOPORTES	GUIDE AND SUPPORT GROUP
3	C	GRUPO PORTHERRAMIENTAS Y CORREDERAS	TOOLHOLDER AND SLIDER GROUP
4	D	GRUPO SEPARADOR	BREAKER GROUP

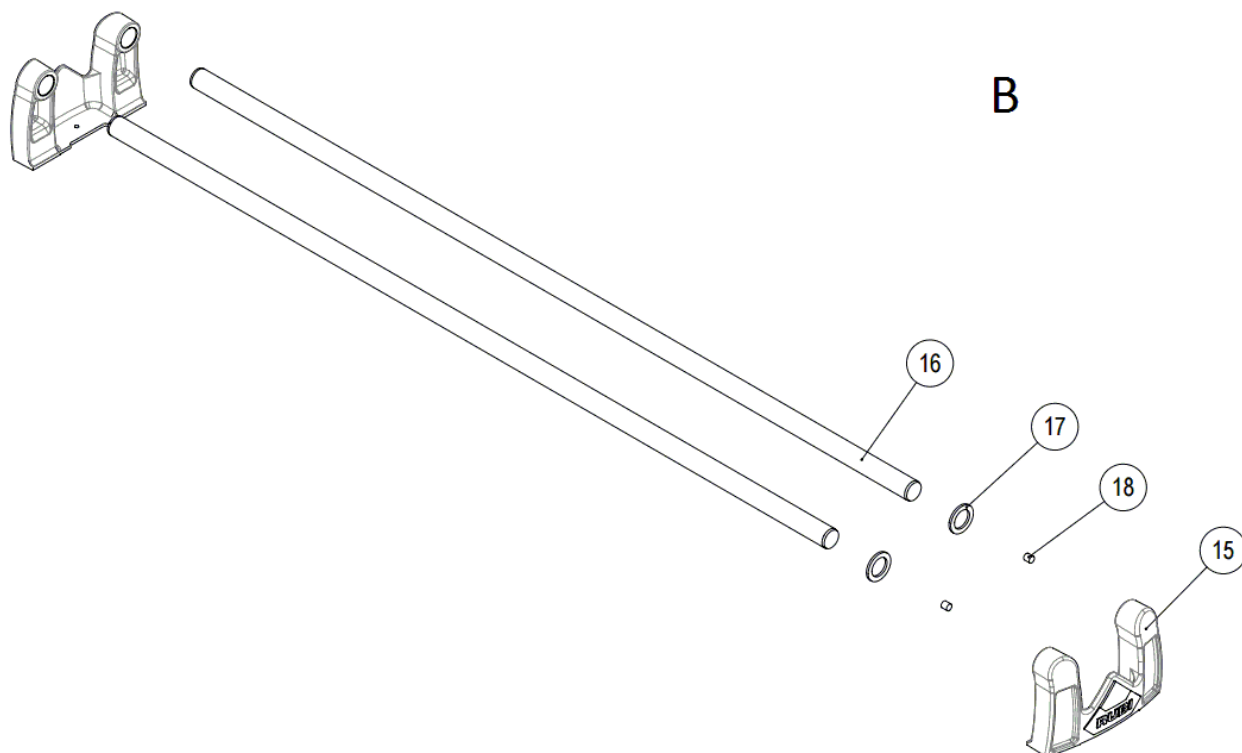
Prod.	ES	EN	From serial num.
15930	TF-66 MAX -CORTADOR MANUAL	TF-66 MAX	-
15931	TF-66 MAX CON MALETA -CORTADOR MAN.	TF-66 MAX WITH CASE	-
15932	TF-93 MAX -CORTADOR MANUAL	TF-93 MAX	-

Queda reservado el derecho de introducir cualquier modificacion técnica sin previo aviso

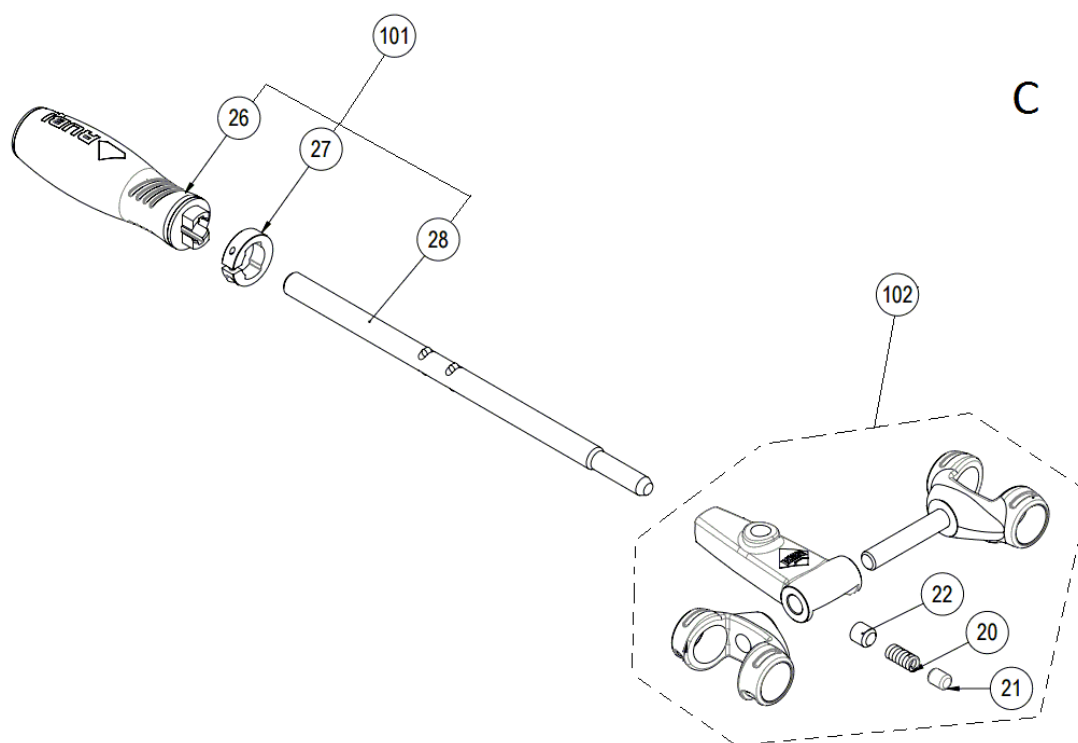
We reserve the right to introduce any technical modification without previous notice



Part-list	ES	EN	Prod.
1 15851 2	REFUERZO BASE TF-60 V4	REINFORCEMENT BASE TF-60 V4	
2 15853 1	BASE TF-60 V4	BASE TF-60 V4	15930, 15931
2 15854 1	BASE TF-90 V4	BASE TF-90 V4	15932
3 15749 1	TOPE LATERAL TS-60/70 V2	SIDE STOP TS-60/70 V2	
4 45038 6	ARAND DIN 9021 A6,4 ZN	WASHER DIN 9021 A6,4 ZP	
5 40020 10	TUERCA DIN 985 M6 CL8 ZN AUTOBLOC	HEX LOCK NUT DIN 985 M6 CL8 ZP	
6 25177 4	ARAND DIN 125 A6,4 ZN	WASHER DIN 125 A6,4 ZP	
7 15769 4	PIE DE GOMA 40-40X66	RUBBER SHOE 40-40X66	
8 55047 4	ARAND DIN 9021 A8,4 ZN	WASHER DIN 9021 A8,4 ZP	
9 57039 4	TORN DIN 933 M8X30 6.8	SCREW DIN 933 M8X30 6.8 ZP	
10 15792 1	TORN SPAX 3,5X19 ZN	SCREW SPAX 3,5X19 ZP	
11 15839 1	CJ.ESCUADRA TS-60/70 MAX	SQUARE SET FOR TS-60/70 MAX	
12 15763 1	PLACA BASE TF-40/60	BASE PLANK TF-40/60	
13 15781 2	TORN DIN 7984 M6X40 6.8 ZN	SCREW DIN 7984 M6X40 6.8 ZP	
14 15791 4	TORN DIN 966 M6X40 6.8 ZN	SCREW DIN 966 M6X40 6.8 ZP	
44 15242 1	MALETA TF-60/R V2	CASE TF-60/R V2	15931
45 15761 2	CIERRE MALETA 89X54 TS50/60,TR,TM,TX	PLASTIC LATCH 89X54 (TS50/60,TR,TM,TX)	15931
100 17021 2	COM.POMO M6X10 ROJO	RED KNOB SET M6X10	

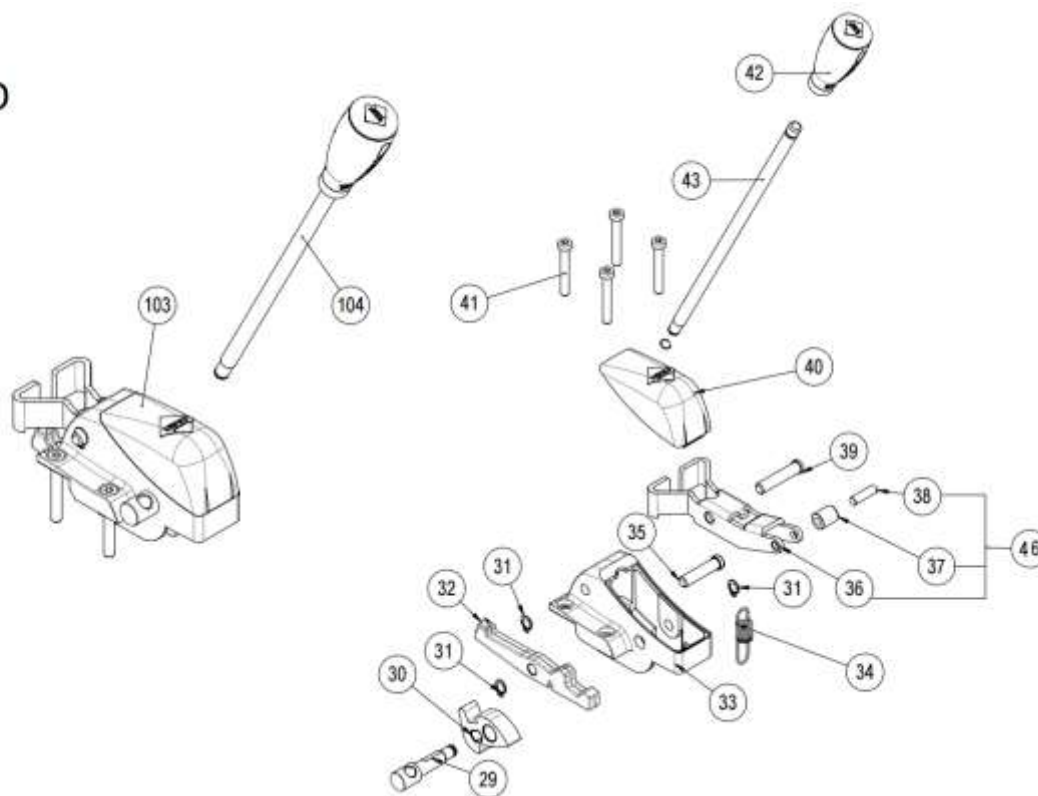


Part-list	ES	EN	Prod.
15 15181 2	SOPORTE TS-50/60 V3/NG	GUIDE SUPPORT TS-50/60 V3/BLK	
16 15223 2	GUIA Ø 17 L=790 CROMADA	CHROMING GUIDE Ø 17 L=790	15930, 15931
16 15850 2	GUIA Ø 17 L=1064 CROMADA	CHROMING GUIDE Ø 17 L=1064	15932
17 16096 2	TOPE CORREDERA Ø16,8X25X2	SLIDE TOP TS MAX	
18 15136 2	TACO GOMA Ø 6X6	RUBBER STOPPER 6X6	



Part-list	ES	EN	Prod.
20 15128 1	MUELLE FRENO PORTAHERRAM.	TOOLHOLDER BRAKE SPRING	
21 15113 1	TACO DE NYLON Ø 5.5X 1.5 K-180	NYLON STOPFEN DIA.5.5X 1.5 K-180	
22 17580 1	TORN DIN 913 M10X1,25X10 PAV.ACEITADO	SCREW DIN 913 M10X10X1,25 6.8	
26 18361 1	MANGO RESTYLING TS/TR/TX V2	RESTYLING HANDLE TS/TR/TX V2	
27 18316 1	ANILLO MANGO RESTYLING TS	RESTYLING HANDLE RING TS	
28 18362 1	VARILLA MANGO RESTYLING TS V2	RESTYLING HANDLE BAR TS V2	
101 18811 1	CJ.MANGO RESTYLING TS	RESTYLING HANDLE SET TS	
102 16830 1	CJ.CORREDERA.PORTAHERRAM.TS MAX	TOOL-HOLDER TS MAX	

D



Part-list	ES	EN	Prod.
29 7154 1	EJE LEVA SEPARADOR TS	AXLE CAM BREAKER TS	
30 16093 1	LEVA COMANDO SEPARADOR TS MAX	BREAKER CAM TS MAX	
31 7162 3	ANILLO DIN 471 Ø 8 ZN	CIRCLIP DIN 471 Ø 8 ZP	
32 15220 1	PALANCA SUFRID.SEPARADOR TS MAX	LOWER LEVER SEPARATOR TS MAX	
33 16263 1	CARCASA SEPARADOR PLUS V3	SEPARATOR CASE PLUS V3	
34 7159 1	MUELLE PALANCA SEPARADOR "S"	S BREAKER INNER SPRING	
35 7169 1	EJE PALANCA SUFRIDERA	AXLE SEPARATOR	
36 16095 1	PALANCA PISON SEP.TS MAX	RAM LEVER SEPARATOR TS MAX	
37 16226 1	CASQ 6X12X14,5 CABONITRURADO	BUSHING 6X12X14,5	
38 16206 1	PASADOR CILINDRICO Ø 6 H7X22	CYLINDRICAL PIN Ø 6 H7X22	
39 7158 1	EJE PALANCA PISON	PITCHER LEVER AXLE	
40 16161 1	TAPA CARCASA SEPARADOR TF MAX	COVER CAP SEPARATOR TF MAX	
41 15781 4	TORN DIN 7984 M6X40 6.8 ZN	SCREW DIN 7984 M6X40 6.8 ZP	
42 18331 1	MANGO RESTYLING SEPARADOR TS	RETYLING SEPARATOR HANDLE TS	
43 18322 1	VARILLA MANGO RESTYLING SEPARADOR TS	RETYLING SEPARATOR HANDLE BAR TS	
46 15805 1	CJ.PALANCA PISON SEP.MAX	TAMPER LEVER SET SEPARATOR MAX	
103 16834 1	CJ.SEPARADOR TF MAX	SEPARATOR SET TF MAX	
104 18814 1	CJ.MANGO RESTYLING SEPARADOR TS	RETYLING SEPARATOR HANDLE SET TS	